

# eLearning Update

Start!



**STAFFING**



**DEVICES**



**BLUEPRINT**



**ELEARNING  
DATA**



**ELEARNING**



**ERATE**



**BLENDED  
LEARNING**



**REMOTE  
LEARNING**



**ONLINE  
LEARNING**

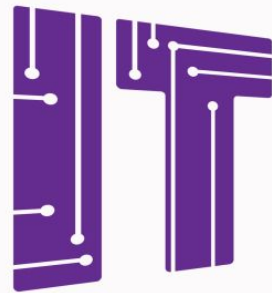
**MISSION**

Supporting staff and students in next generation learning models and the effective integration of educational technology to enhance and transform student learning



STAFFING

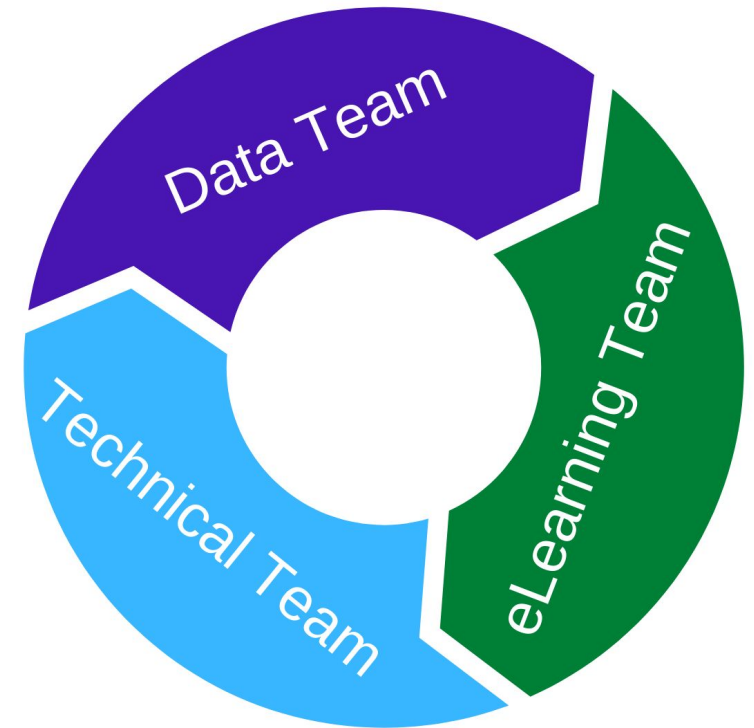
# STAFFING



Services  
MSD Wayne Township

"Teamwork is the ability to work together toward a common vision. The ability to direct individual accomplishments toward organizational objectives. It is the fuel that allows common people to attain uncommon results."

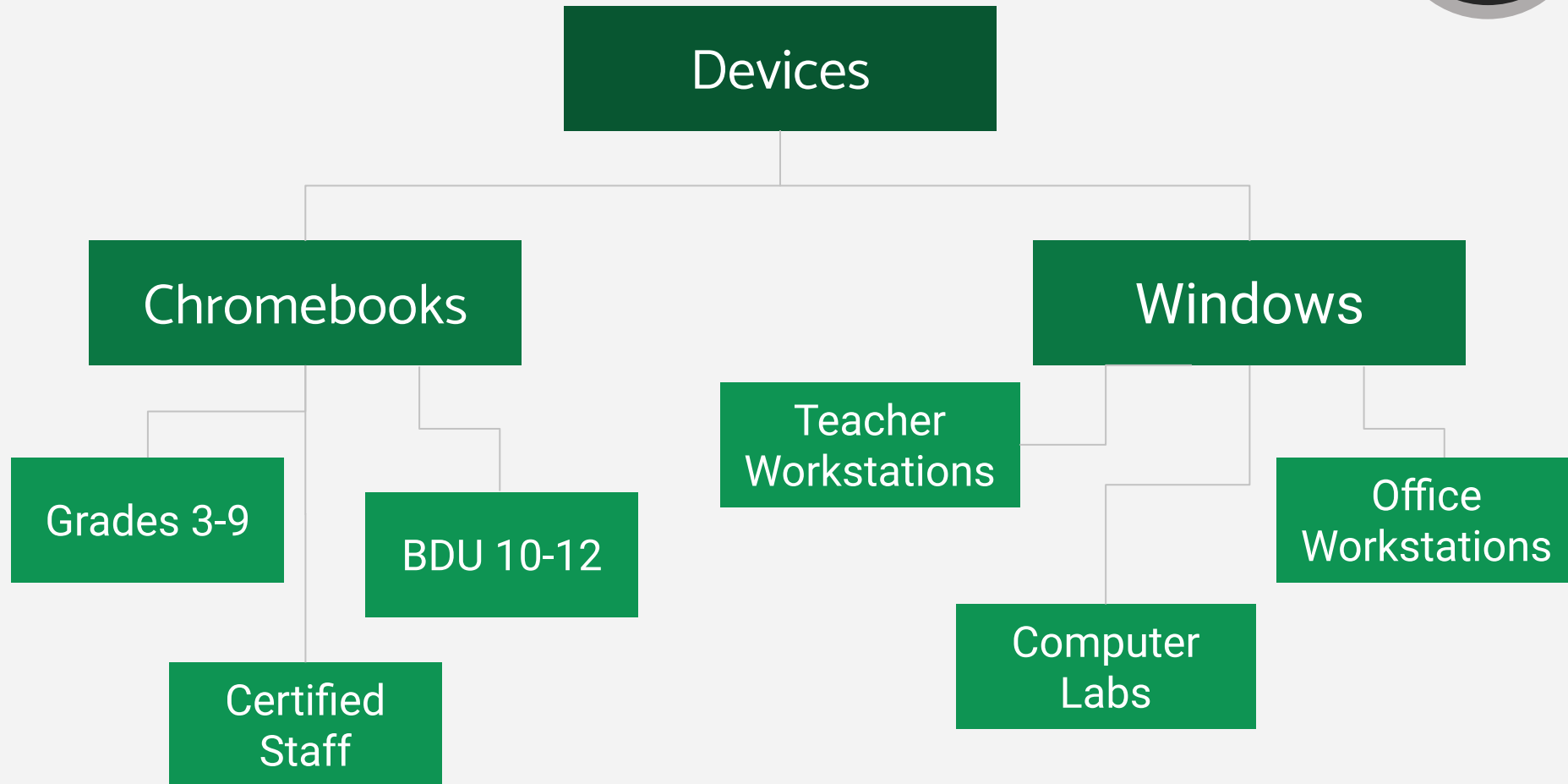
– Andrew Carnegie



MISSION

models and the effective integration of educational technology  
to enhance and transform student learning

# DEVICES



# BLUEPRINT FOR DIGITAL LEARNING

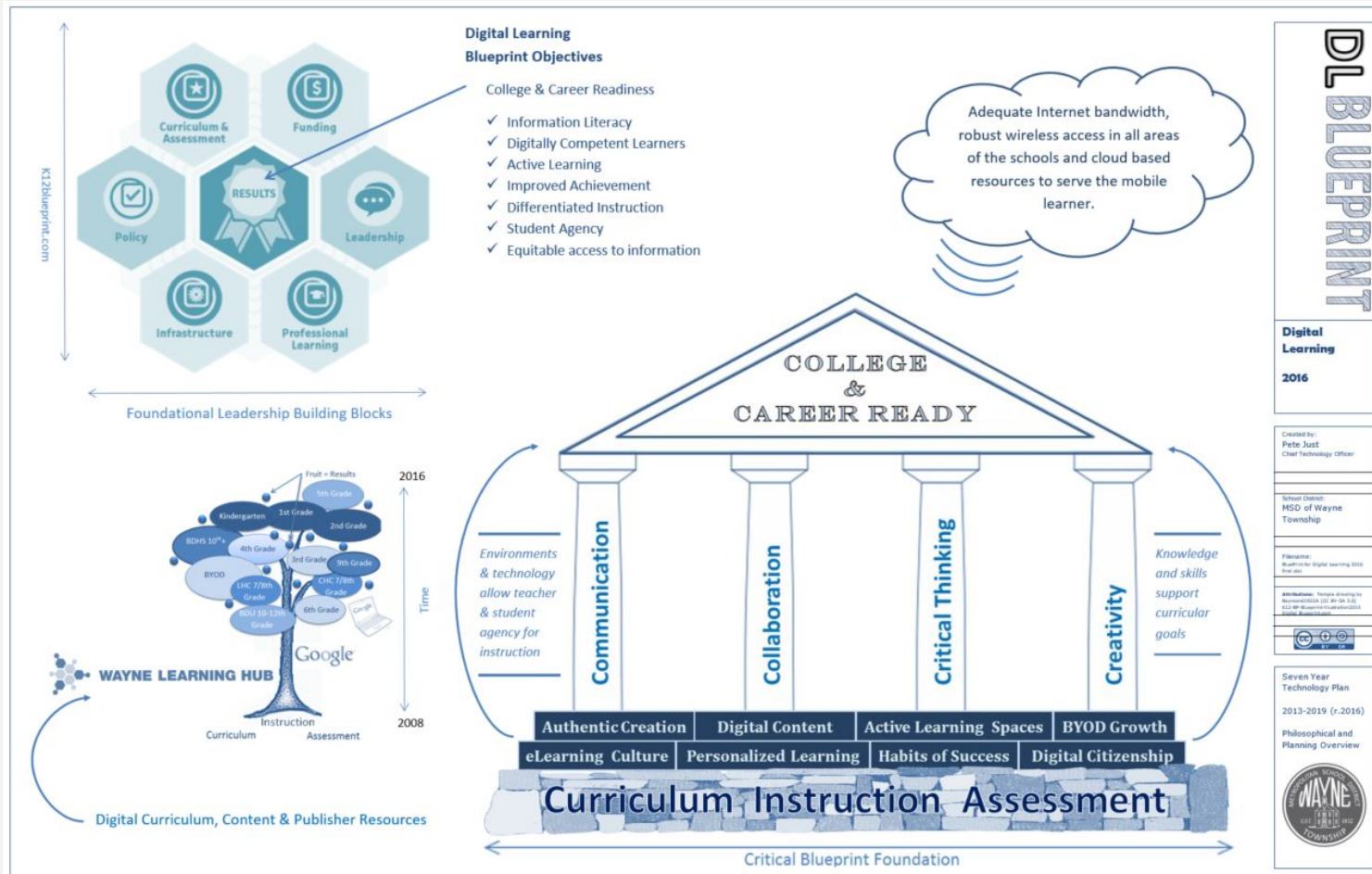


BLUEPRINT

ERATE

ONLINE  
LEARNING

ation learning  
models and the effective integration of educational technology  
to enhance and transform student learning





STAFF



ELEARN  
DATA



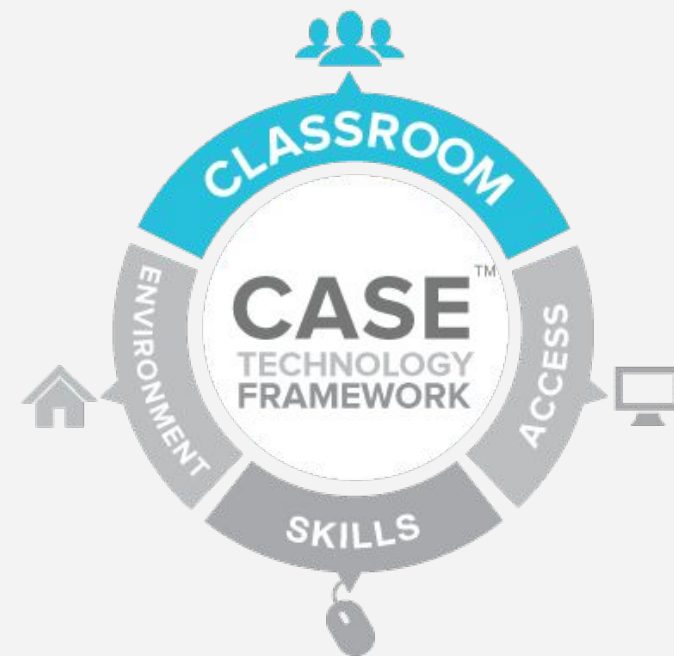
BLEND  
LEARN

MISSION

# ELEARNING DATA



[Clarity Survey Trend Data](#)



# ELEARNING



Utilizing electronic technologies to enable and conduct learning in both conventional classrooms and online classrooms.



**WAYNE  
LEARNING HUB**





# ERATE ANNUAL FUNDING CYCLE



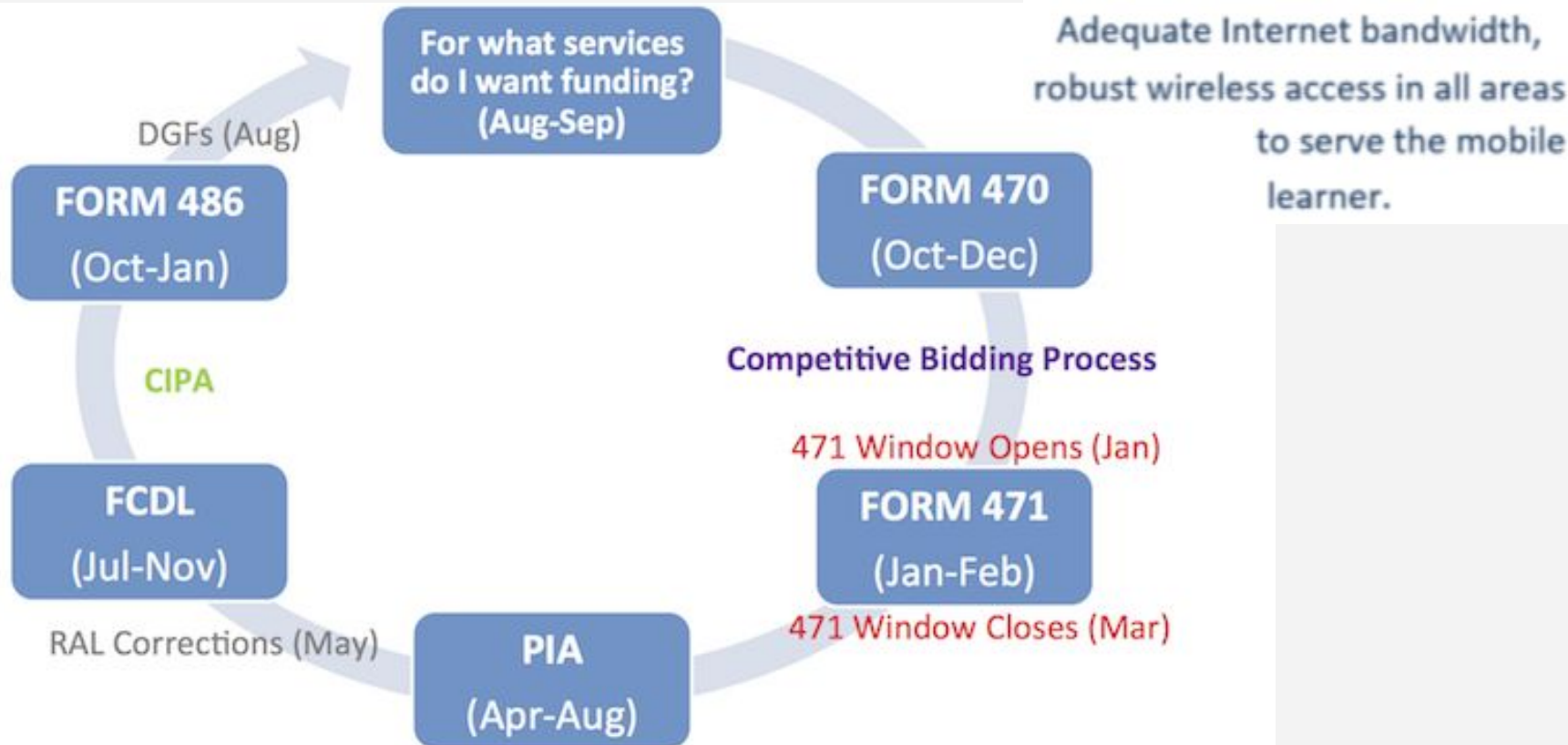
BLUEPRINT

ERATE

ONLINE  
LEARNING

ation learning  
ional technology

to enhance and transform student learning







STAFF



ELEARN  
DATA

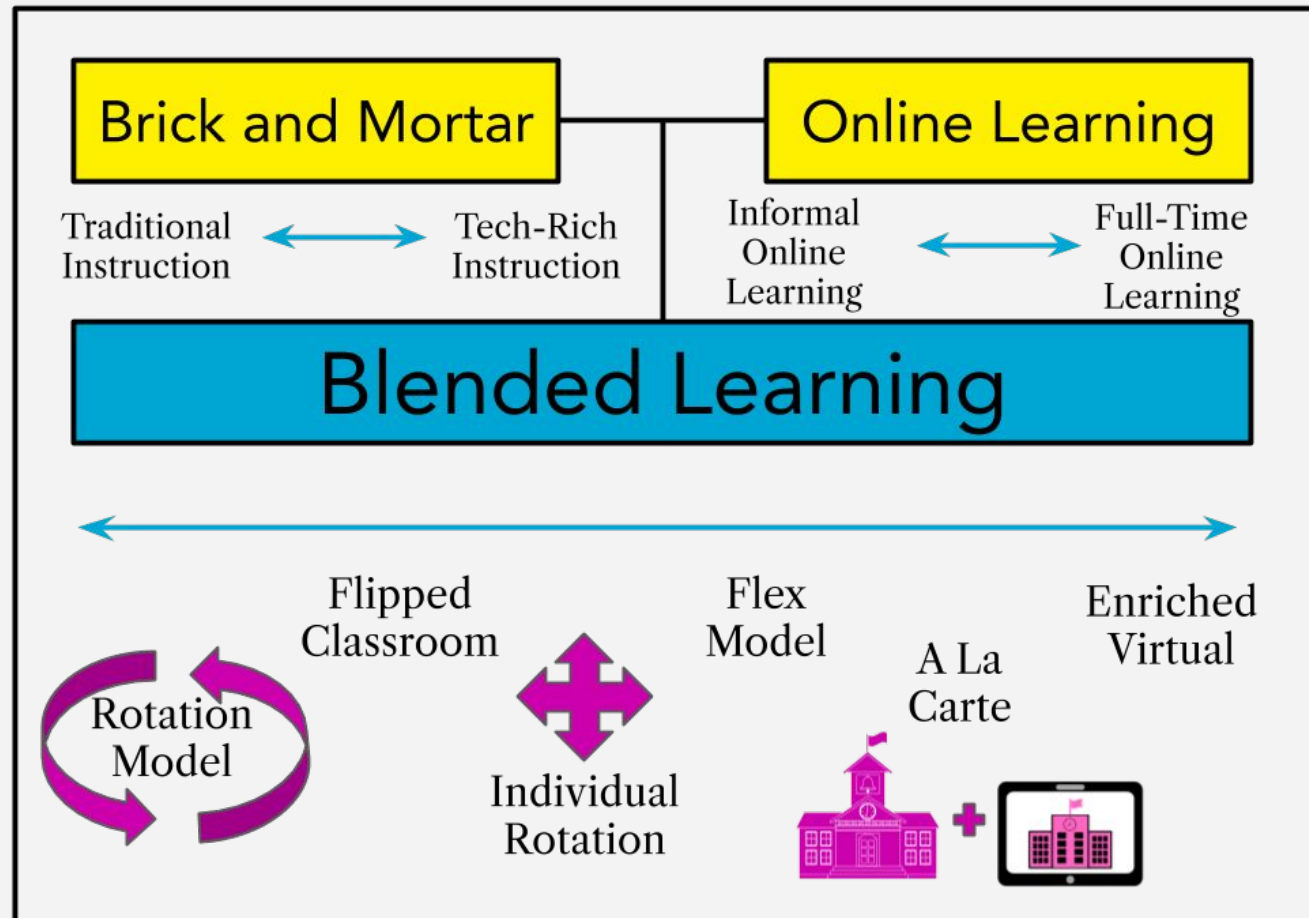


BLEND  
LEARN



MISSION

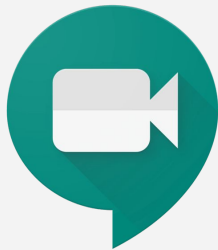
# BLEND



# EMERGENCY REMOTE LEARNING

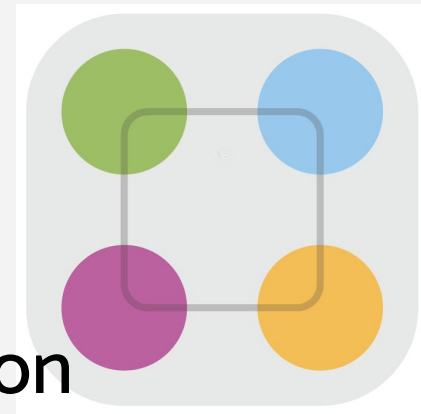


Access



Learning

**WAYNE  
LEARNING HUB**



Communication

# ONLINE LEARNING - ACHIEVE VIRTUAL



BLUEPRINT

ERATE

ONLINE  
LEARNING

ation learning  
ional technology  
arning