



Learning Gardens

Outdoor Classrooms



July 31, 2017
School Board Working Session

What is a Learning Garden?

- + Vibrant **Gathering Place**
- + Productive **Edible Garden**
- + A **Learning Space** for Growing Nutritious Foods and Developing Healthy Habits
- + Dynamic **Outdoor Classroom**



How is a Learning Garden utilized?

- + The school's **Garden Team** directs and manages their Learning Garden
- + School Garden Teams work with Garden Educators to plant a **winter and summer harvest** each year
- + Students enjoy **learning in beautiful garden** space throughout the school year
- + **Students are engaged** in planting, growing, harvesting and eating produce from the garden



Learning Garden Education Resources

- + **Cross-curricular educational** materials
- + Fruit and vegetable **harvests** twice each year
- + Gardening **materials**, tools and instruction
- + Seeds, seedlings, and a **personalized** grow plan for each school's unique garden
- + Teacher **trainings** and **demonstrations**
- + Direct school **support** to ensure Garden Teams have built the capacity needed to sustain their garden



What does a Learning Garden look like?

- + **ADA Accessible** Outdoor Classroom
- + Modular Growing **Containers**
- + Nearby **Shade** and Integrated **Seating**
- + Open Access to Everyone from the **Community**
- + **Customizable** for Each Unique Community



Learning Garden



Learning Garden



Learning Garden Process

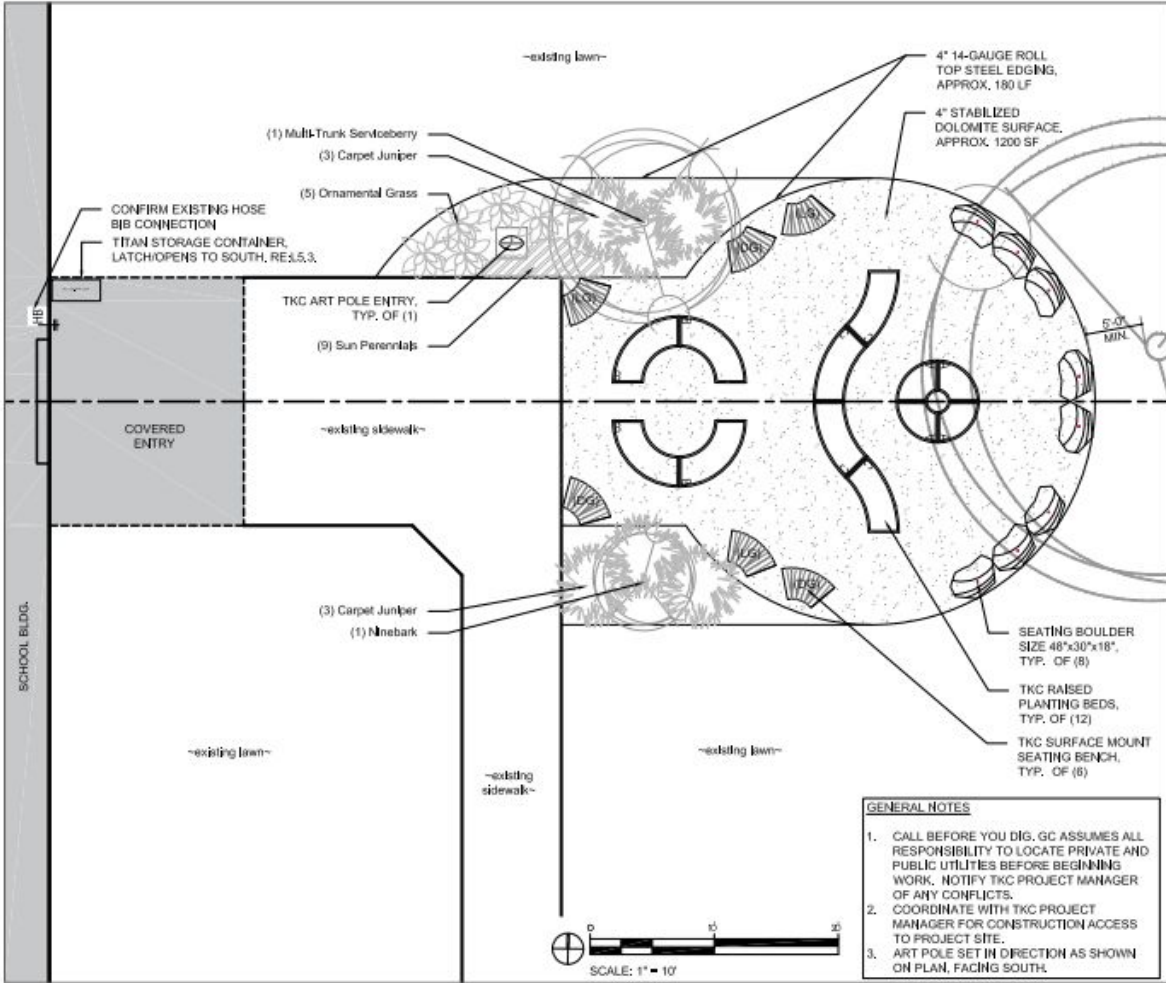
1. School interest
2. Garden Team
3. Learning Garden **Application**
4. The Kitchen Community **Awards** the Gardens
5. Architect design meeting with school team
6. Landscape architect **design** completion
7. Approval of design by school Garden Team
8. Approval of design by Todd Hendricks
9. Agreed upon timeline for **kick-off**, installation and planting



Wayne Learning Gardens

- + Stout Field - Awarded, Design Complete, Kick-Off Scheduled
- + Chapelwood - Application, Awarded, Design Complete
- + Robey - Application, Awarded, Design Meeting
- + Maplewood - Application, Awarded,* Design Meeting
- + Westlake - Application
- + Sanders - Application
- + Ben Davis - Application





The KITCHEN
community
 Creating Inspiring Food
 1424 8th Street
 Boulder, CO 80502

STOUT FIELD ELEMENTARY
3820 WEST BRADBURY AVE.
INDIANAPOLIS, IN 46241

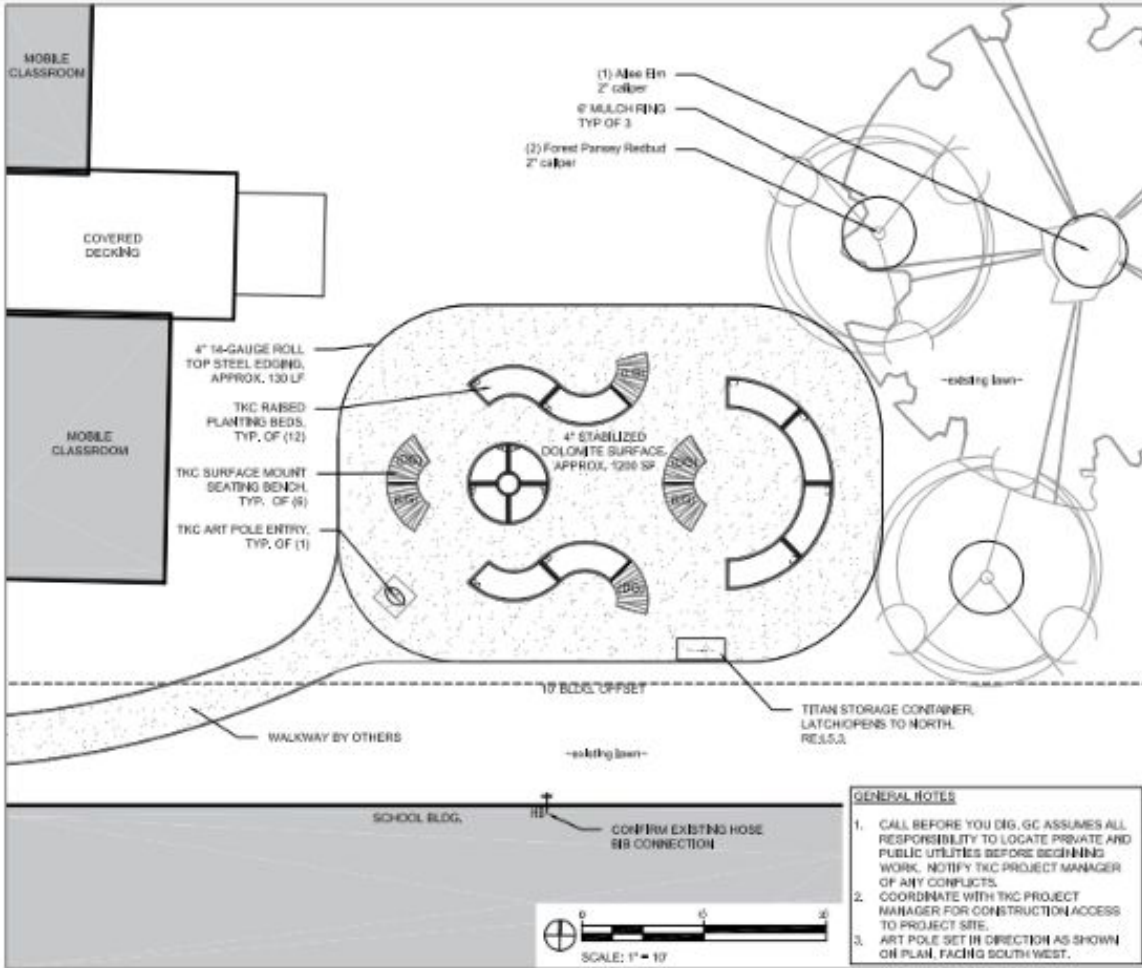
Joe Nazzari
 Drawn by: ANA
 Approved by: JAS
 Date: 07/11/17
 R10401010

Notes:

Site Plan
L1.0

- GENERAL NOTES**
1. CALL BEFORE YOU DIG. GC ASSUMES ALL RESPONSIBILITY TO LOCATE PRIVATE AND PUBLIC UTILITIES BEFORE BEGINNING WORK. NOTIFY TKC PROJECT MANAGER OF ANY CONFLICTS.
 2. COORDINATE WITH TKC PROJECT MANAGER FOR CONSTRUCTION ACCESS TO PROJECT SITE.
 3. ART POLE SET IN DIRECTION AS SHOWN ON PLAN, FACING SOUTH.





The Niceties
community
 Community • Solution Focused
 1125 N. 10th Street
 Indianapolis, IN 46204

CHAPELWOOD ELEMENTARY
 1129 N. GIRLS SCHOOL ROAD
 INDIANAPOLIS, IN 46214

Site Name:
 Design by:
 Approved Date:
 Date: 06/14/17
 Engineer:
 Notes:

Site Plan
 L1.0

- GENERAL NOTES**
1. CALL BEFORE YOU DIG. GC ASSUMES ALL RESPONSIBILITY TO LOCATE PRIVATE AND PUBLIC UTILITIES BEFORE BEGINNING WORK. NOTIFY TKC PROJECT MANAGER OF ANY CONFLICTS.
 2. COORDINATE WITH TKC PROJECT MANAGER FOR CONSTRUCTION ACCESS TO PROJECT SITE.
 3. ART POLE SET IN DIRECTION AS SHOWN ON PLAN, FACING SOUTH WEST.



Superintendent's Goals

1. **Achievement**
 - a. Integrated learning opportunities
 - b. Spaces for learning and movement
2. **Community Engagement**
 - a. Community access and use of the space
 - b. Community engagement in planning/care
3. **Wellness**
 - a. Growing, eating and experiencing real food





The Kitchen Community Mission

*Strengthen Communities By Accelerating The
Real Food Movement at Scale*



We believe that every child deserves the
opportunity to learn, play, and grow in a
healthy community

The Kitchen Community

CEO and co-founder Kimbal Musk

- + Increase preference for healthy foods, develop healthier response to stress and improve academic performance



The Kitchen Community

Learning Gardens at Scale

- + 100 Gardens per community
- + Denver, Chicago, Los Angeles, Memphis, Pittsburgh, and Indianapolis

Currently Impact

- + 100,000 students

2020 Impact Goal

- + Reach 1,000,000 students



Judy Stegemann
Assistant Superintendent for
Academics

